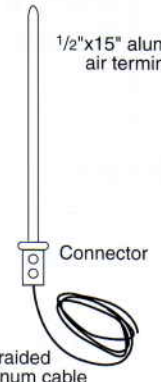






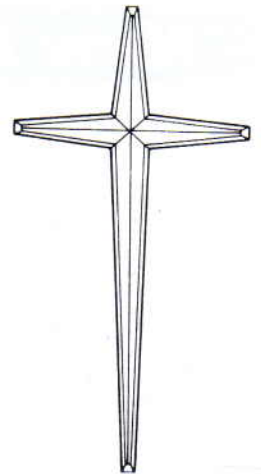
Steeple Options

(SEE PRICE LIST FOR ADDITIONAL OPTIONS)

<p>OPTIONAL LIGHTNING CABLE & AIR TERMINAL</p>  <p>1/2"x15" aluminum air terminal</p> <p>Connector</p> <p>5/8" braided aluminum cable</p> <p>LIGHTNING PROTECTION KIT</p>	<p>OPTIONAL STEEPLE CROSSES</p> <div style="display: flex; justify-content: space-around;"> <div data-bbox="494 403 622 627">  <p>MODEL 2 2'x18"</p> </div> <div data-bbox="686 380 813 627">  <p>MODEL 3 3'x24"</p> </div> </div> <div style="display: flex; justify-content: space-around;"> <div data-bbox="494 649 622 940">  <p>MODEL 4 4'x30"</p> </div> <div data-bbox="686 627 813 940">  <p>3' or 4' with 8" BALL</p> </div> </div>
--	---

CROSSES

COLORS: White is standard. Crosses can be added to the top of any model steeple. The overall height of the steeple will be shortened approximately 12 to 18 inches when a cross is added. The tip of the steeple must be cut off in order to match the body width of the cross.

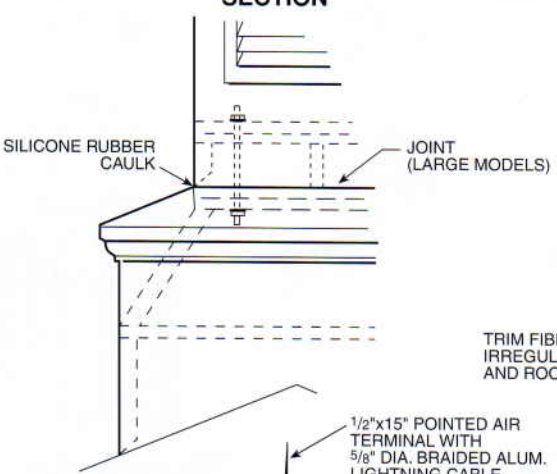


Model B
4' x 2'6"
5' x 2'6"
6' x 3'
8' x 4'
10' x 5'

FIBERGLASS WALL-MOUNTED CROSSES: Prices include mounting brackets on all crosses which will hold the cross off the wall. If back lighting is ordered, the price includes fluorescent lights the full length of the cross.

Steeple Mounting Details

TYPICAL SUB-ASSEMBLY SECTION



SILICONE RUBBER CAULK

JOINT (LARGE MODELS)

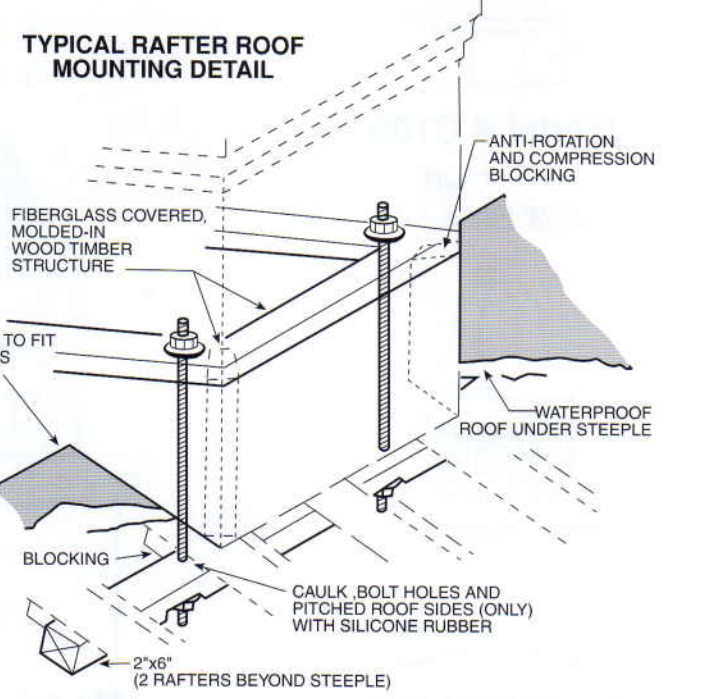
1/2"x15" POINTED AIR TERMINAL WITH 5/8" DIA. BRAIDED ALUM. LIGHTNING CABLE.

1 1/4" ROUND FIBERGLASS MOLDED-IN LIGHTNING PROTECTION MOUNT.

2"x2" SQUARE ALUMINUM CROSS

OPTIONAL CROSS AND LIGHTNING PROTECTION

TYPICAL RAFTER ROOF MOUNTING DETAIL



FIBERGLASS COVERED, MOLDED-IN WOOD TIMBER STRUCTURE

ANTI-ROTATION AND COMPRESSION BLOCKING

WATERPROOF ROOF UNDER STEEPLE

TRIM FIBERGLASS TO FIT IRREGULAR ROOFS AND ROOF CAPS

BLOCKING

CAULK, BOLT HOLES AND PITCHED ROOF SIDES (ONLY) WITH SILICONE RUBBER

2"x6" (2 RAFTERS BEYOND STEEPLE)

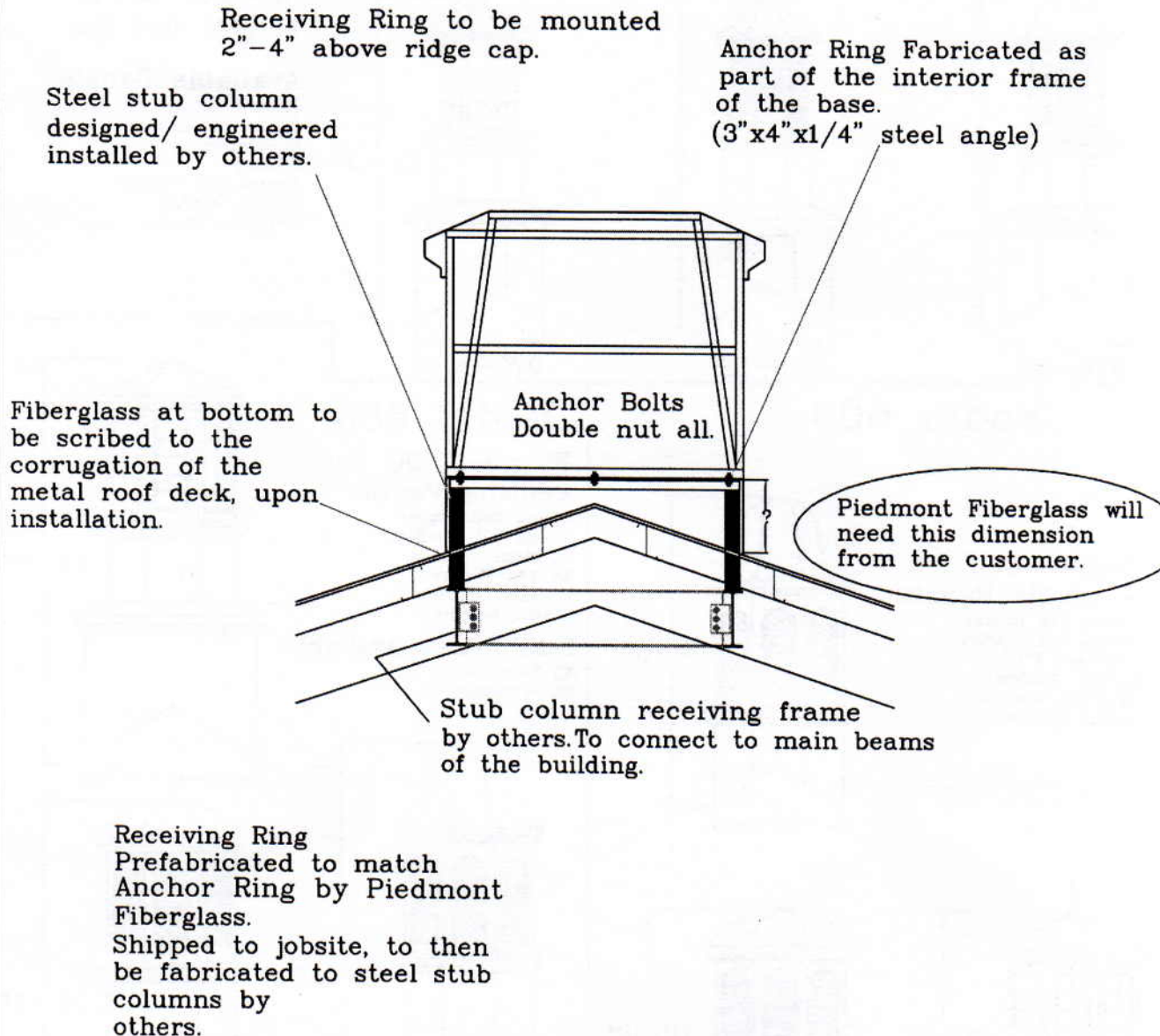
NOTE: ALL STEEPLES MUST BE MOUNTED ON A COMPLETED WATERPROOF ROOF OR TOWER PLATFORM AS LONG-TERM INSURANCE AGAINST LEAKAGE

Pre-Engineered Metal Building Steeple Receiving Ring

To ensure the best installation of our steeple on Pre-Engineered Metal Buildings, we recommend using the Receiving Ring. The Receiving Ring will work in conjunction with stub columns and an internal steel structure that should be designed by your building manufacturer. This complete structure will then distribute the weight of the steeple throughout your buildings main beams.

R
E
C
E
I
V
I
N
G

R
I
N
G



*Piedmont Fiberglass Inc. is not responsible for the installation of the Receiving Ring.

