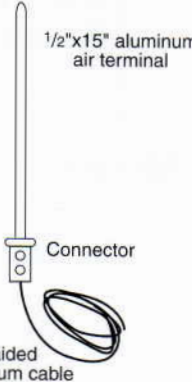
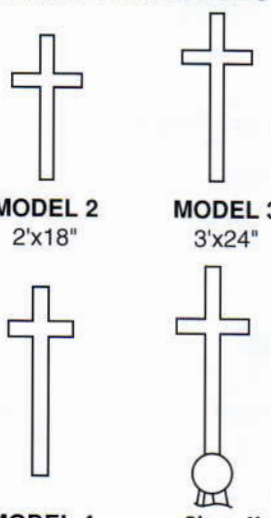


Steeple Options

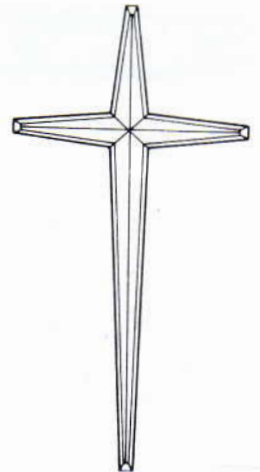
(SEE PRICE LIST FOR ADDITIONAL OPTIONS)

<p>OPTIONAL LIGHTNING CABLE & AIR TERMINAL</p>  <p>1/2"x15" aluminum air terminal</p> <p>Connector</p> <p>5/8" braided aluminum cable</p> <p>LIGHTNING PROTECTION KIT</p>	<p>OPTIONAL STEEPLE CROSSES</p>  <p>MODEL 2 2'x18"</p> <p>MODEL 3 3'x24"</p> <p>MODEL 4 4'x30"</p> <p>3' or 4' with 8" BALL</p>
--	---

CROSSES

COLORS: White is standard. Crosses can be added to the top of any model steeple. The overall height of the steeple will be shortened approximately 12 to 18 inches when a cross is added. The tip of the steeple must be cut off in order to match the body width of the cross.

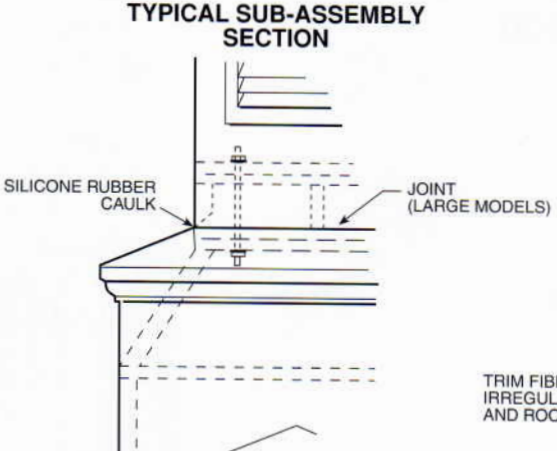
FIBERGLASS WALL-MOUNTED CROSSES: Prices include mounting brackets on all crosses which will hold the cross off the wall. If back lighting is ordered, the price includes fluorescent lights the full length of the cross.



Model B
4' x 2'6"
5' x 2'6"
6' x 3'
8' x 4'
10' x 5'

Steeple Mounting Details

TYPICAL SUB-ASSEMBLY SECTION



SILICONE RUBBER CAULK

JOINT (LARGE MODELS)

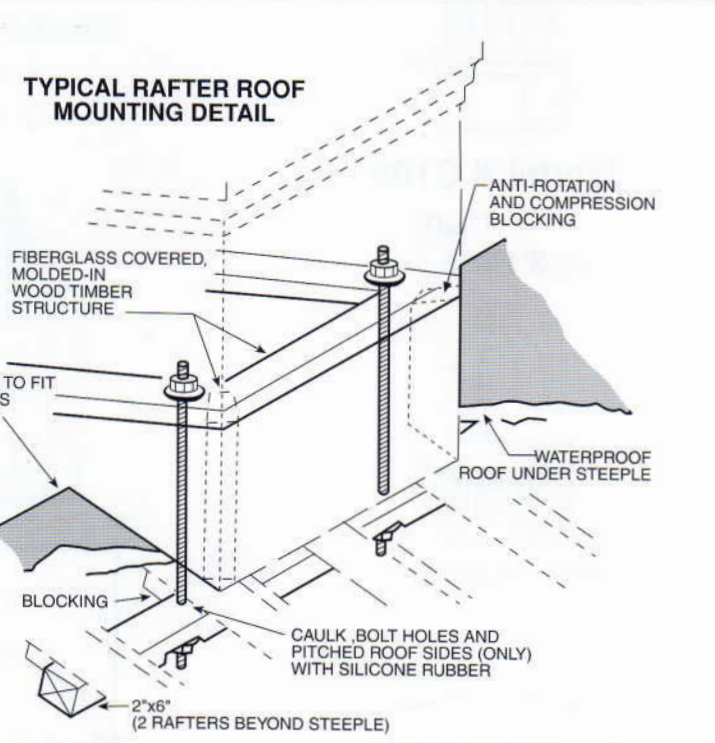
1/2"x15" POINTED AIR TERMINAL WITH 5/8" DIA. BRAIDED ALUM. LIGHTNING CABLE.

1/4" ROUND FIBERGLASS MOLDED-IN LIGHTNING PROTECTION MOUNT.

2"x2" SQUARE ALUMINUM CROSS

OPTIONAL CROSS AND LIGHTNING PROTECTION

TYPICAL RAFTER ROOF MOUNTING DETAIL



FIBERGLASS COVERED, MOLDED-IN WOOD TIMBER STRUCTURE

ANTI-ROTATION AND COMPRESSION BLOCKING

TRIM FIBERGLASS TO FIT IRREGULAR ROOFS AND ROOF CAPS

BLOCKING

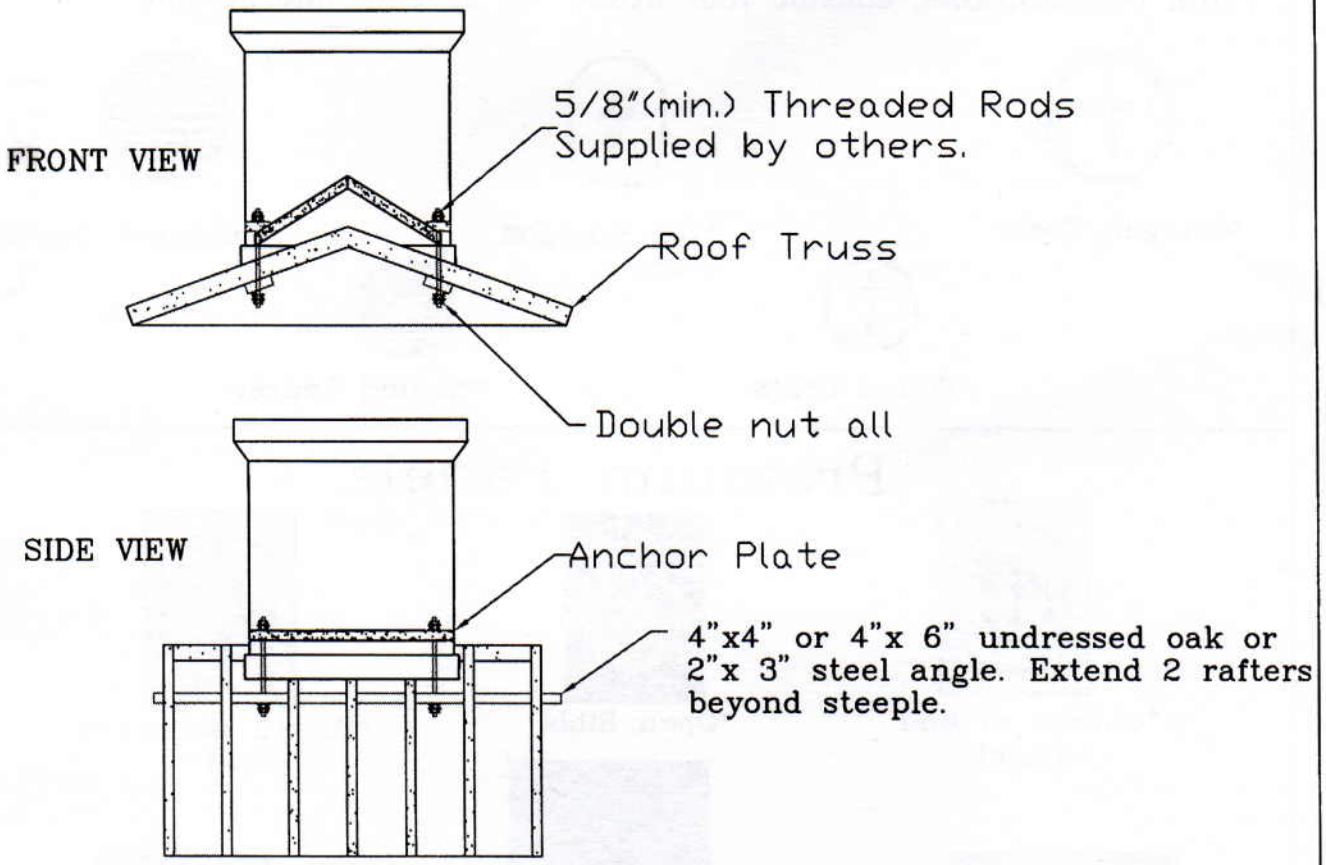
CAULK, BOLT HOLES AND PITCHED ROOF SIDES (ONLY) WITH SILICONE RUBBER

2"x6" (2 RAFTERS BEYOND STEEPLE)

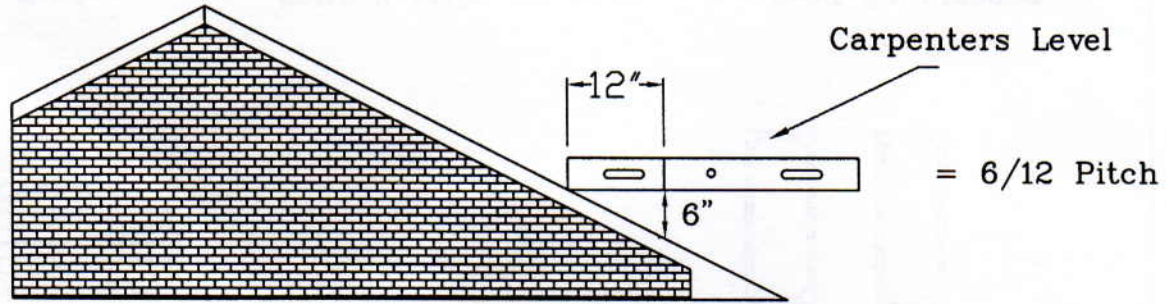
WATERPROOF ROOF UNDER STEEPLE

NOTE: ALL STEEPLES MUST BE MOUNTED ON A COMPLETED WATERPROOF ROOF OR TOWER PLATFORM AS LONG-TERM INSURANCE AGAINST LEAKAGE

As all buildings differ; so do the anchoring techniques. Shown below is the most popular configuration. Call your dealer or factory for specific details.



All steeple orders require a roof pitch. Shown below is one example to determine your roof pitch



Place the level on the roof as shown(level). Measure out 12" from the BOTTOM corner of the level. From that point, measure straight down to the roof surface. That distance over 12 is the roof pitch.

$$\frac{\text{distance from level to roof}}{12} = \text{roof pitch}$$